



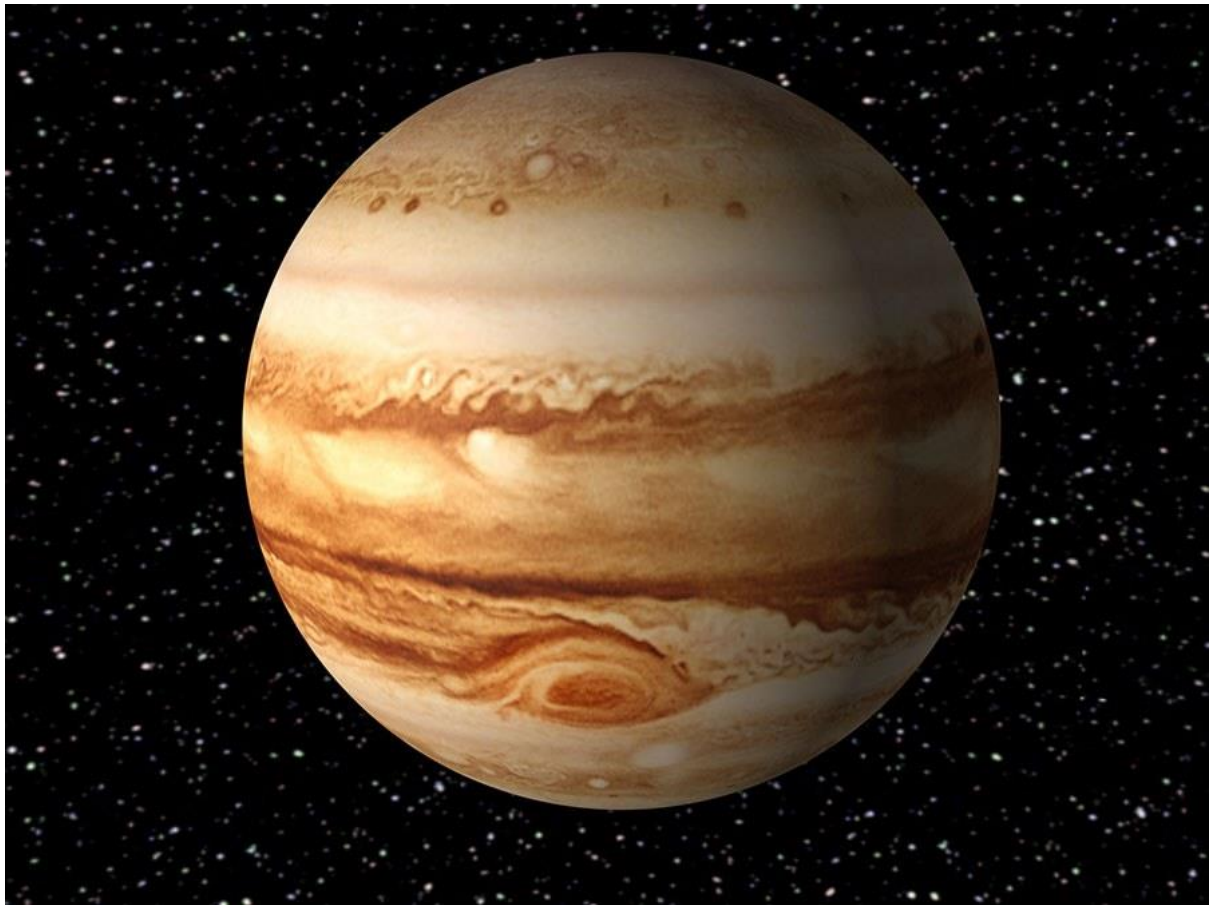
Class 6 Summer Term 2 2022.

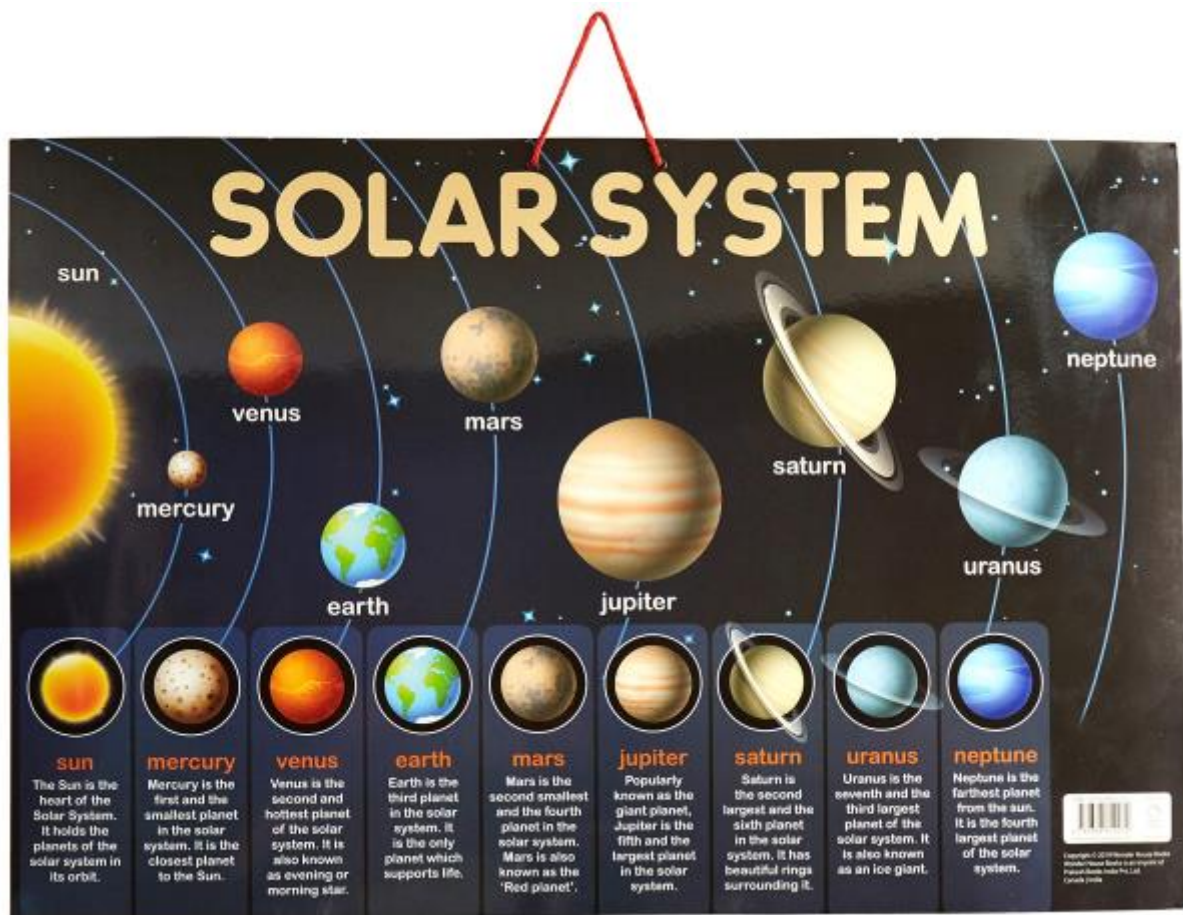
Our Key subject for the topic is: Infinity and Beyond - the earth, moon and beyond

Our Key Learning skill for this half term is: Problem solving



- Geographical features of the planet Earth
- Continents and oceans.
- Know and identify on a map. Equator and tropics. Know location and identify on a world map.
- Poles and time zones and GMT.
- Night and day, seasons and years
- Phases of the Moon. Planets and planetoids of the solar system.
- Movements of the planets.





Science: Evolution and inheritance



- What do fossils tell us about how things have changed?
- Who was Darwin and why was he so controversial?
- Theory of Evolution – is it possible we have evolved from apes?
- Animal adaptation and evolution over time
- Plant adaptation and evolution over time

Art and design: Pencil sketching



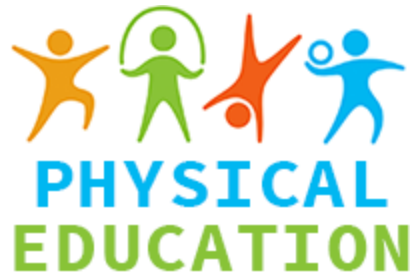
- Sketching and shading techniques
- Light and shade
- Still life sketching

Computing: Coding



- Set start conditions which could include using sensors later on.
- Use repeat and loop commands. Use the 'if' and 'not' conditions to set variables.
- Create code for a given purpose or to achieve a goal.
- Test code and debug/change where needed.

Athletics and rounders



Athletics and rounders skills work and games

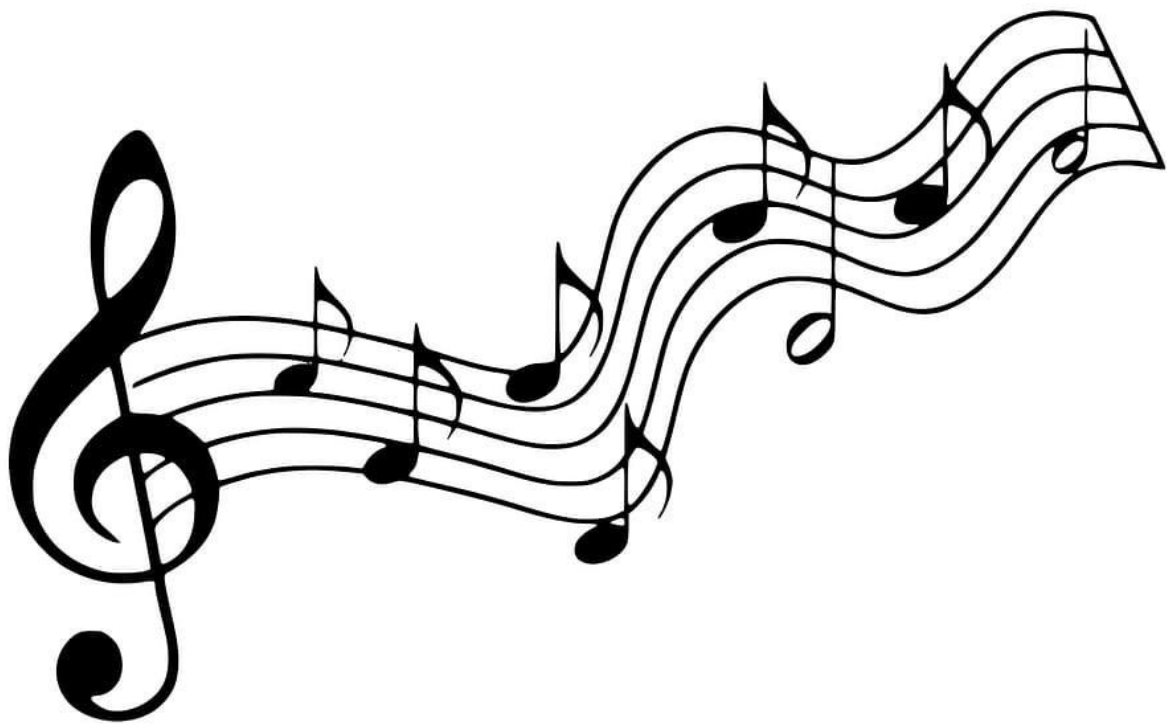
French



We follow the Wakefield 'La Jolie Ronde' scheme for learning French in upper KS2.

We will be building the learners spoken vocabulary and confidence by using oral drills and pair work and role play.

Music



- Listen and respond to music from different eras from jazz and blues to the present day

RE - Moral/ethical dilemmas from the bible in modern contexts



Religious Education